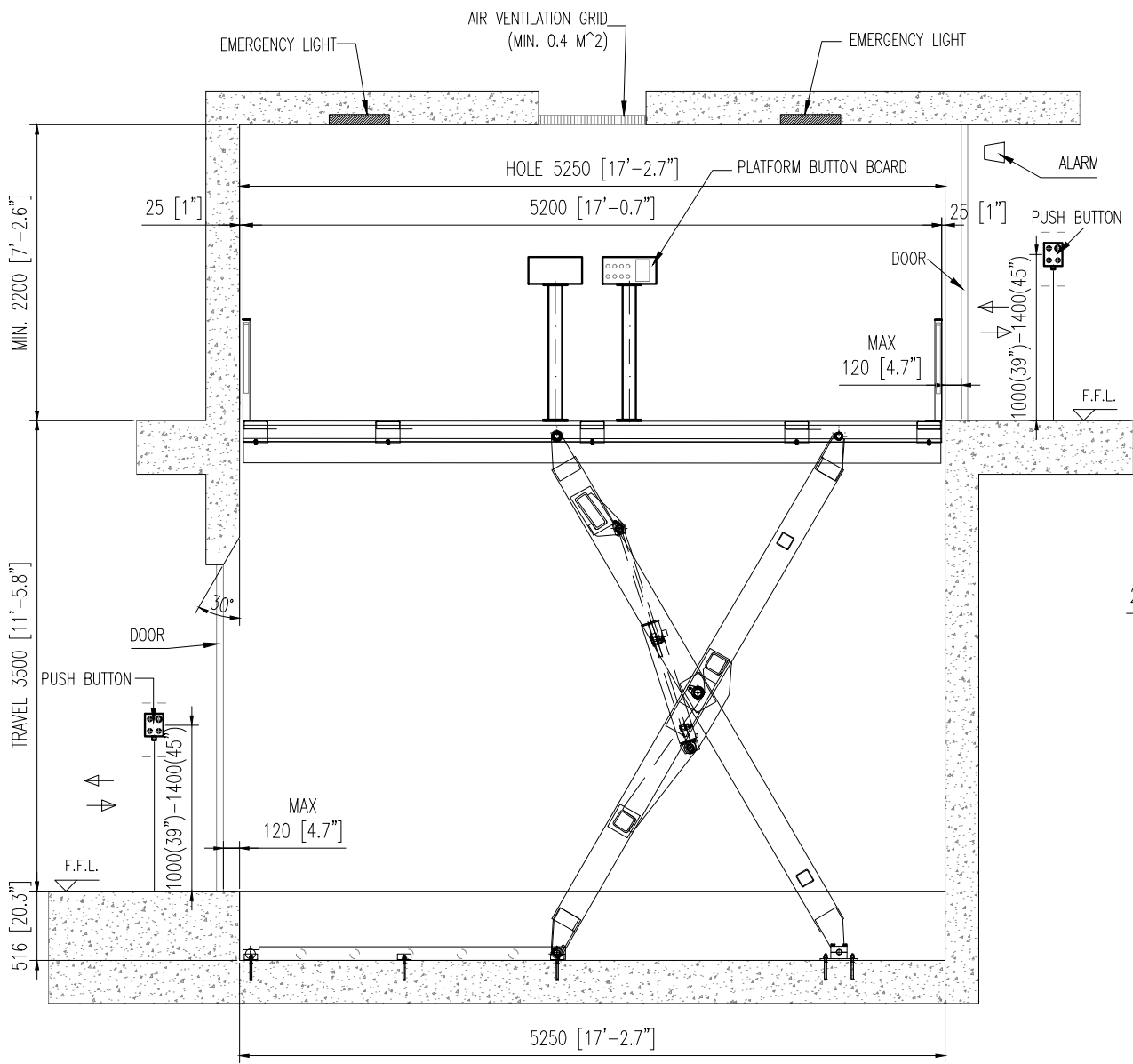
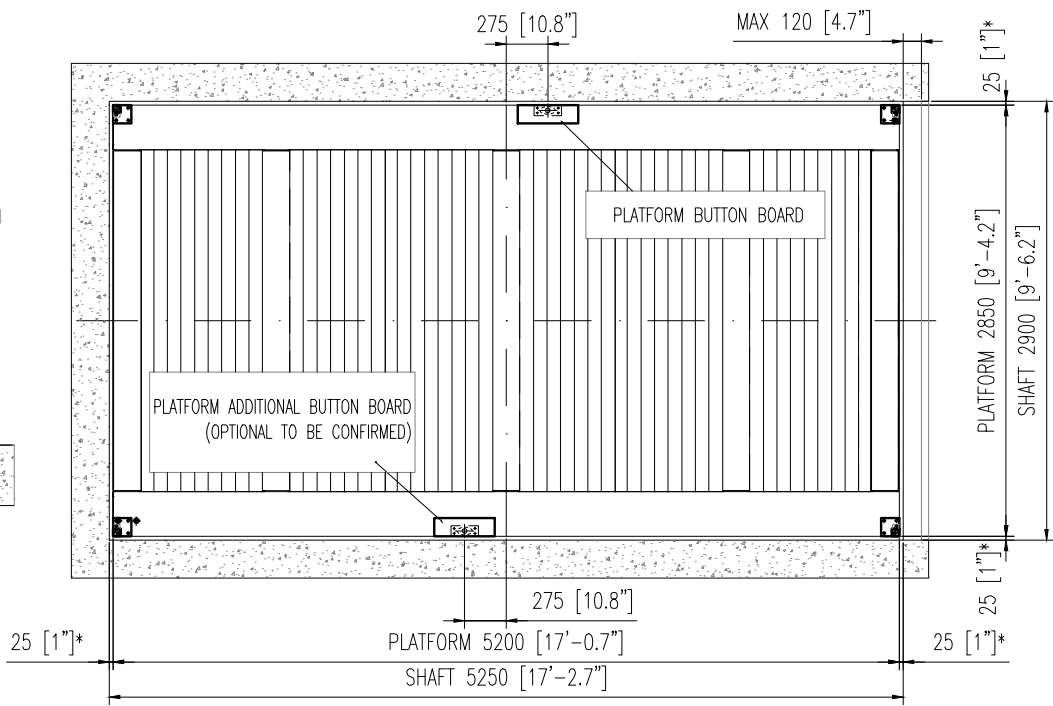


LATERAL VIEW



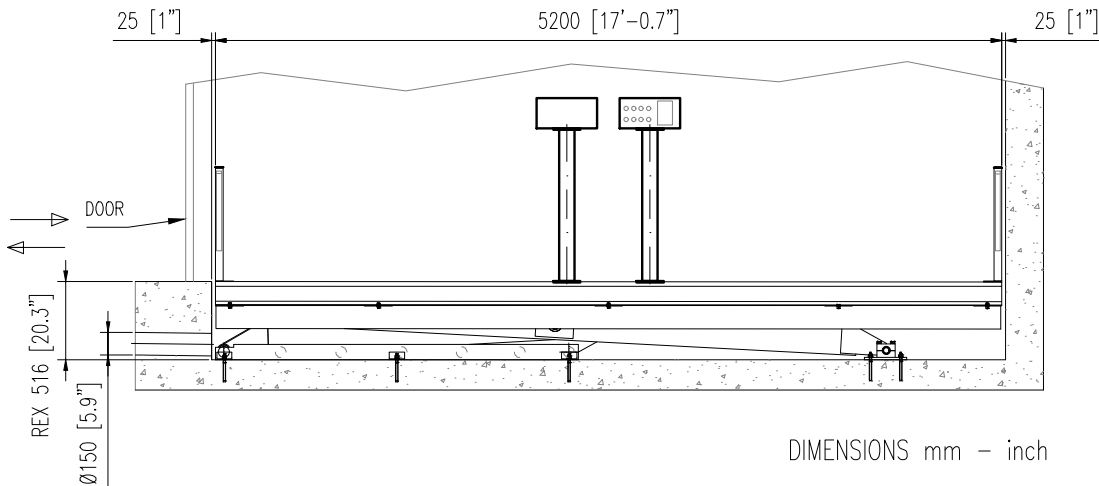
PLANT VIEW



(\*) PLEASE LET TAKE INTO ACCOUNT THAT  
A CLEARANCE <25 mm-1" HAS TO BE MANDATORY

PLEASE DEFINE POSITIONING OF:  
- HYDRAULIC POWER UNIT  
- PUSH BUTTON

LATERAL VIEW



GENERAL LAYOUT

HLS UNDERLINES THAT:  
- THE LAYOUT IS VALID JUST FOR THE QUOTED DIMENSIONS  
- THE OUT OF SCALE MEASURES ARE HIGHLIGHTED  
- THE LAYOUT CANNOT BE USED TO EXTRACT CONSTRUCTIVE DETAILS, EXCEPT WHERE SPECIFICALLY HIGHLIGHTED

HLS DECLINES ANY RESPONSIBILITY FOR THE IMPROPER USE OF THE DGW FILE

THE CUSTOMER HAS TO TAKE CABLE CHANNELS WITH DIAMETER Ø40 (1.5") FOR THE CONNECTION BETWEEN THE CONTROL UNIT AND THE PUSH-BUTTON

FENCES AND SAFETY DEVICES AND PROTECTIONS HAVE TO BE DEFINED BY THE INSTALLATION MANAGER ACCORDING THE FINAL LAYOUT AND THE RELEVANT RISK ANALYS

MAX CAPACITY			3000 Kg – 6600 lb		
TRAVEL			max 3500 mm – 7700 lb		
STOPS			2		
CYLINDER ROD DIAMETER			ø80 (3.1”)		
MAIN POWER			HYDRAULIC		
POWER SUPPLY			380V 3ph 50Hz		
MOTOR POWER			4 KW		
MIN RUNNING PRESSOURE			100 bar		
MAX RUNNING PRESSOURE			280 bar		
NOMINAL CURRENT			8.2 A		
STARTING CURRENT			49.2 A		
AVERAGE SPEED			0.06 m/s – 0.2 ft/s		
COMMAND TYPE		ON PLATFORM	-		
		AT EACH FLOOR	DEAD MAN		
ELECTRIC LOCK TYPE			PIZZATO FG60AD5DOZ-V34 24 AC/DC ACTUATOR VFKEYF22		
MAGNETIC SENSOR TYPE			SCHMERSAL BNS 303-11z		
FLOOR	ENTRIES	DOORS	PUSH BUTTON	ELECTRIC LOCK	MAGNETIC SENSOR
1	*	*	1	*	1
2	*	*	1	*	1

(\*) = TO BE DEFINED INTO ORDER

REVISIONS:

No.	REVISION DESCRIPTION	DRAWN	DATE

**COPYRIGHT**  
THIS DRAWING IS COPYRIGHT AND THE PROPERTY OF THE AUTHOR IT MUST NOT BE RETAINED, COPIED OR USED WITHOUT THE AUTHORITY OF THE AUTHOR.  
**DISCLAIMER**  
THIS DRAWING AND ITS CONTENTS ARE ELECTRONICALLY GENERATED, ARE CONFIDENTIAL AND MAY ONLY BE USED FOR THE PURPOSE FOR WHICH THEY WERE INTENDED. THE AUTHOR WILL NOT ACCEPT RESPONSIBILITY FOR ANY CONSEQUENCES ARISING FROM THE USE OF THE DRAWING FOR OTHER THAN ITS INTENDED PURPOSE OR WHERE THE DRAWING HAS BEEN ALTERED, AMENDED OR CHANGED EITHER MANUALLY OR ELECTRONICALLY BY ANY THIRD PARTY.  
**NOTE**  
THIS IS AN UNCONTROLLED DOCUMENT ISSUED FOR INFORMATION PURPOSES ONLY, UNLESS THE CHECKED SECTIONS ARE SIGNED OR COMPLETED. FIGURED DIMENSIONS TAKE PRECEDENCE OVER SCALED. DO NOT SCALE REDUCED SIZE DRAWINGS. VERIFY DIMENSIONS PRIOR TO COMMENCING ANY ON-SITE OR OFF-SITE WORKS OR FABRICATION. IF IN DOUBT - ASK

**HLS**  
Equipment



PROJECT TITLE

	PROJECT LEADER: <b>A.SHARPE</b>	SIGNATURE:
	DESIGNER:	
	DRAFTSPERSON: <b>MM</b>	DATE:
	SCALE: <b>NOT TO SCALE</b>	SHEET SIZE: <b>A3</b>
	JOB No.: <b>-</b>	DRAWING No.: <b>01</b>
		REVISION:

